

The logo features the text "BELEW DRUG" in a red, hand-drawn, uppercase font. The word "FAMILY OF PHARMACIES" is written below it in a blue, hand-drawn, uppercase font. On either side of the word "BELEW DRUG" is a blue icon of a mortar and pestle.

BELEW DRUG
FAMILY OF PHARMACIES

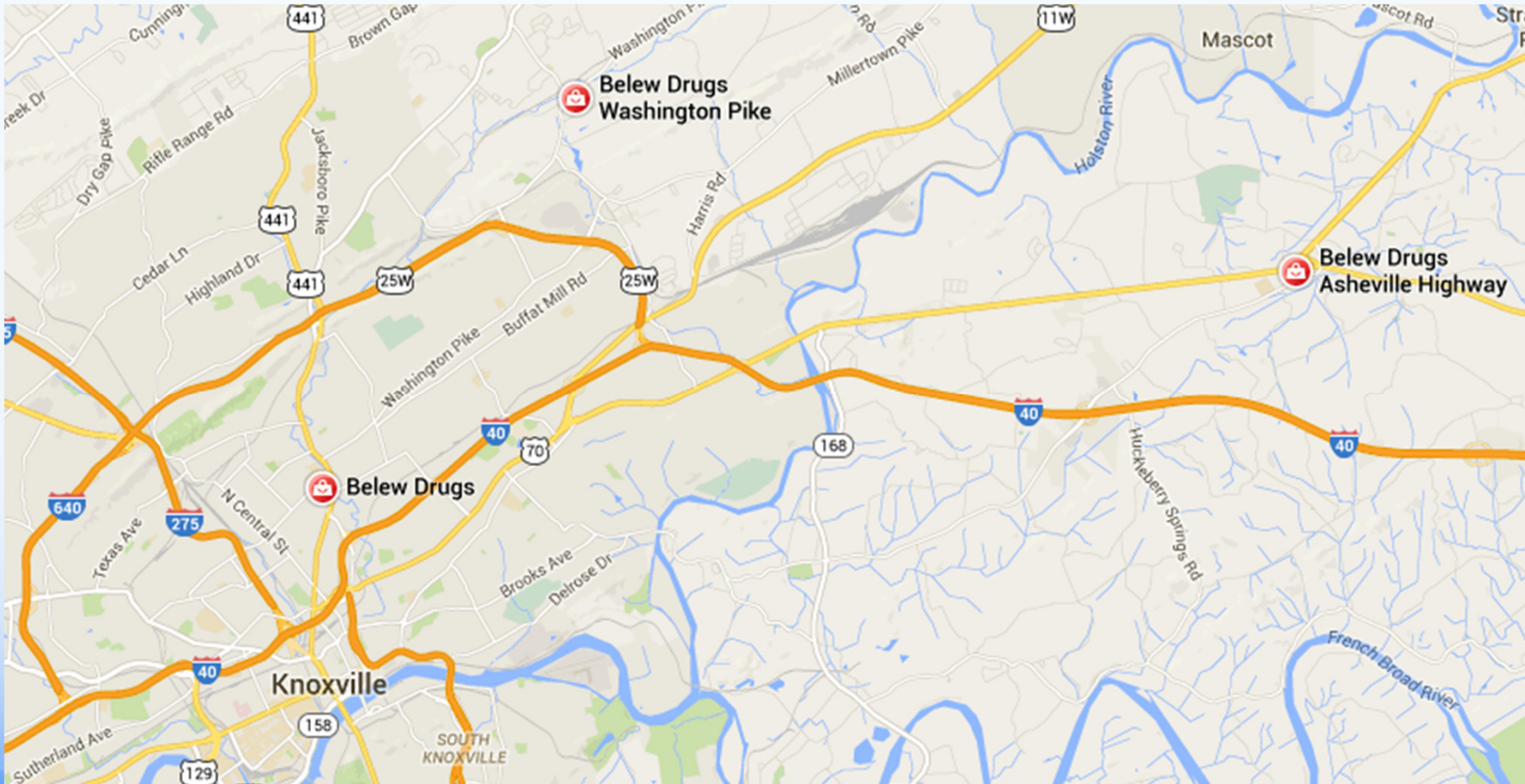
Samantha Boldin, PharmD
Scott Haluska

Who We Are

**Our mission statement:
To provide exceptional
patient care services
that promote health and
well-being in a
progressive and
nurturing environment.**



Locations



Broadway

2021 N. Broadway

Knoxville, TN 37917

Phone: (865) 525-4189



**Celebrating
50 years in
2015!**

Washington Pike

5908 Washington Pike,

Suite 102

Knoxville, TN 37918

Phone: (865) 525-4967



Belew Drug

Asheville Hwy

8622 Asheville Hwy

Knoxville, TN 37924

Phone: (865) 933-3441

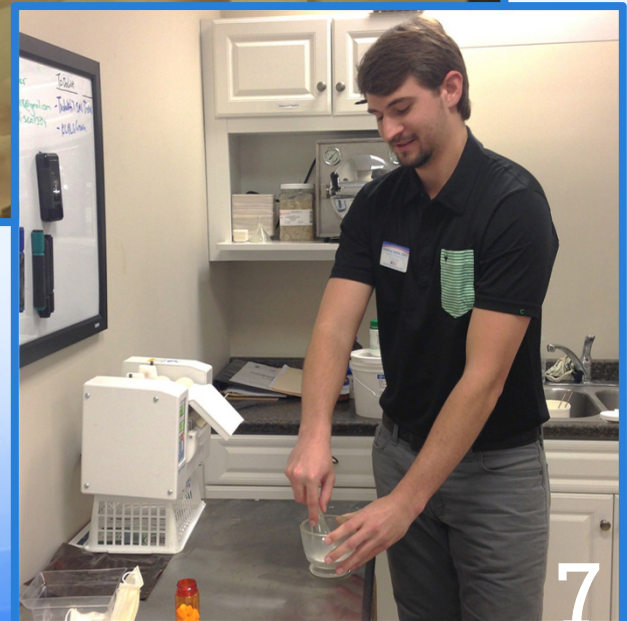


Belew Drug

Asheville Highway

Services

- Free Local Delivery (Broadway Store)
- Free Kids' Vitamins
- Sterile and Non-Sterile Compounding



Services

- Medication Therapy Management (MTM) Services
- Pharmacogenetics
- Point-of-Care Testing
 - Blood pressure
 - Blood glucose



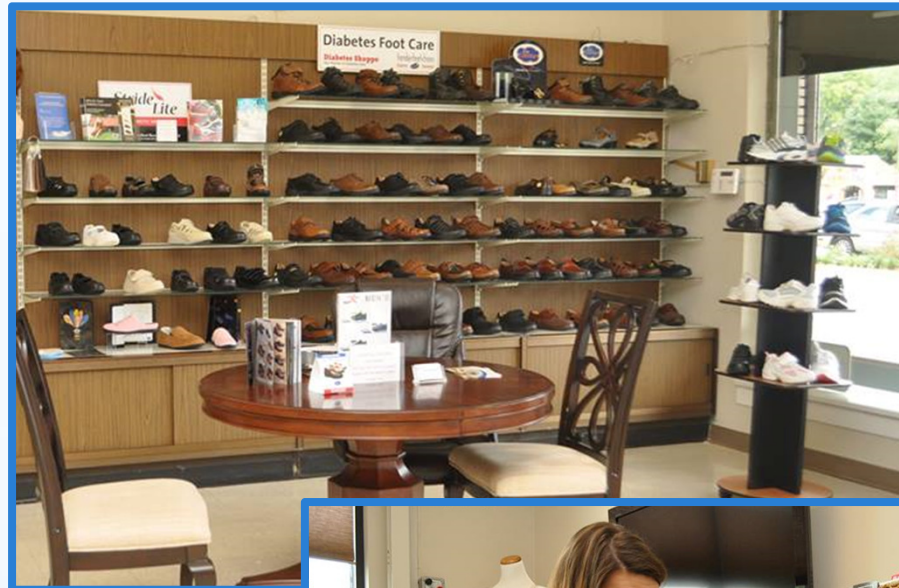
Services

- Immunizations
 - Flu
 - Shingles
 - Tetanus, diphtheria, and pertussis
 - Pneumococcal
 - Hepatitis A/B
 - Measles, Mumps, and Rubella
 - Meningococcal
- B-12 Injections



Services

- Diabetic Shoes
- Compression socks & hose
- Post-Mastectomy Boutique
- Durable Medical Equipment



Services



- Patient Education
 - “The Sweet Spot” FREE Diabetes Education
 - Second Thursday each month at Asheville Hwy location



Community Outreach

- Belew Backpacks for School
- Sponsor local schools & athletics
 - Carter Corner



Belew Drug



Community Outreach

- Medication Disposal Events
 - Partnered with Knoxville Police Department & Health Department
 - Asheville Highway: July 10-11 (9 am to 1 pm)
 - Broadway: September 25-26 (9 am to 1 pm)



Belew Drug

First event
collected 700
pounds of unused
medications!

Transitions of Care Programs

Transitions of Care

- Medication Reconciliation
 - New standard of care & current research project underway
- Patient Education



Medication Reconciliation

		Drug/Dose/Directions	Drug/Dose/Directions	Drug/Dose/Directions	Drug/Dose/Directions
Source	Discharge Medication List				
	Pharmacy Profile List				
Evaluation	Concordant (C) or Discordant (D)				
	Discordant Type				
	Medication Related Problem				

Medication Related Problems

1. Drug allergy
2. Drug-drug interaction
3. Contraindication
4. Missing therapy
5. Unnecessary therapy
6. Cost related issue
7. Inappropriate drug (high-risk medication)
8. Medication non-adherence

Discordant Type

1. Omission (missing from discharge list)
2. Addition (additional on discharge list)
3. Drug
4. Dose
5. Frequency
6. Formulary Change (same drug class)

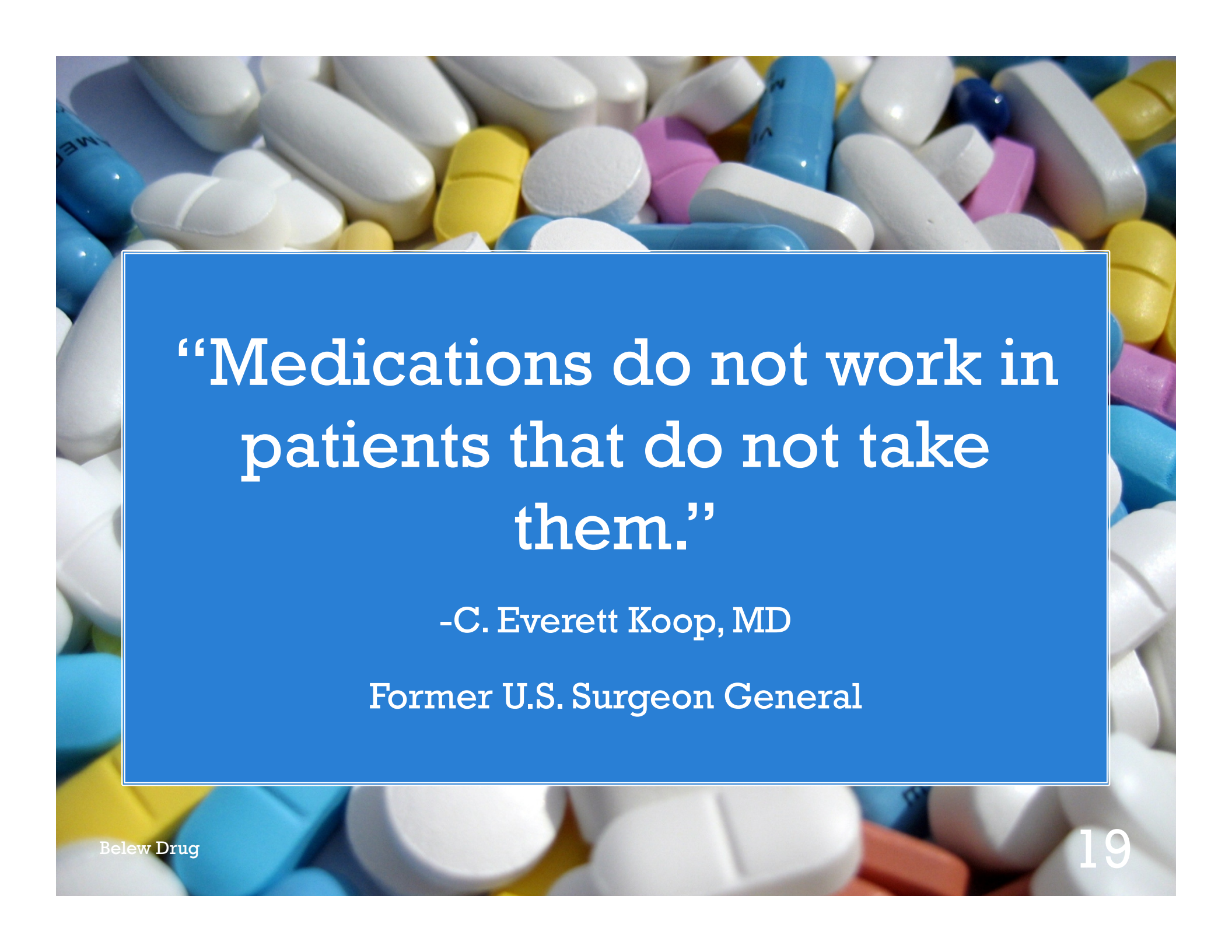
Patient Education

- Medication counseling after hospital discharge
- Inhaler & device technique



Adherence Programs

EZ-Sync Rx
Precision Pak



“Medications do not work in
patients that do not take
them.”

-C. Everett Koop, MD

Former U.S. Surgeon General

Services

- Medication Adherence: EZ-Sync Rx™
- Medication Packaging: Precision Pak™



Belew Drug



EZ-Sync Rx™

- Prescription synchronization program
- Synchronizes all medications to one/two monthly pick-up and/or delivery
- Great for those with multiple medications or conditions



EZ-Sync Rx™

- Pharmacy team member regularly contacts patient prior to refill date to check in with patient.
- Pharmacy team contacts prescribers ahead of monthly fill date for needed refills.
- Check-in by pharmacy staff helps ensure patient hasn't forgotten a med and helps look for issues like adverse effects.

Precision Pak™

Before



After



Precision Pak™

- No additional charge to patients outside of Rx copays
- Free home delivery
- Synchronizes all medications and reduces burden on caregivers
- Can tear off doses for day or week to carry



Who is Precision Pak™ for?

Multiple medications

Homebound

Physical/mental limitations

Frequent hospitalizations

Caregivers

Assisted living

Busy lifestyle

Precision Pak™

- Patients identified by pharmacy team, prescribers, caregivers, or self
- Arrange meeting with Scott for enrollment
- Once enrolled, Pak Team verifies all medications correct with prescribers.
- Pharmacist performs “Comprehensive Medication Review” to identify issues.
- First Precision Pak™ filled. Once patient receives, regular follow-up as needed for each patient.

Pak™ By the Numbers

- Average Pak Patient Age: 65.5 years old
- Average Pak Patient Number of meds: 9.3 per month (including OTC items)
- Current enrollment: 130 patients
 - Majority of patients are Medicare or TennCare

Pak™ By the Numbers

- Adherence rates
 - Proportion of days covered (PDC): 82%
 - PDC includes PRN meds
 - Medicare goal: > 80% on hypertension, diabetes, cholesterol meds
- Hospital Admissions
 - Can only see information for non-Tennova facilities (etHIN)
 - 61 admissions to hospital after enrollment, 19 were readmissions within 30 days (17 patients)

Pak™ Service Area

- Service includes free delivery to patient's home
- 60 minute radius from Broadway location



Patient Responsibilities

- Agree to be home one day a month for delivery of Pak or pick-up on time at pharmacy
- Answer the phone when Precision Pak™ team members call
- Pay all co-pays and deductibles as required by insurance
- Alert the Precision Pak™ team when your medications have changed
- Tear open the Pak™ and take your medication on the date and time indicated

Prescriber Responsibilities

- Respond efficiently to communication from Precision Pak™ team including faxes, phone calls, or emails
 - Respond with approvals OR denials on refill requests, pharmacists' recommendations, or prior authorizations
- Alert Precision Pak™ team when the patient's medication regimen is altered.
- Send all prescriptions to Belew Drug

How to Refer a Patient:

- Call any Belew Drug location for EZ-Sync™
- Contact Scott Haluska for Precision Pak™
 - (865) 414-0263
 - Scott.Haluska@belewdrugs.com

Success Stories

- Ms. M
 - Blind patient
- Ms. H
 - Patient lost TennCare coverage
- Mr. & Mrs. M
 - Calling cardiologist office every week

Staying Connected

- Website:
<http://www.belewdrugs.com>
- Facebook:
<https://www.facebook.com/BelewDrugsWashingtonPike>
- Twitter:
<https://twitter.com/Belewdrugs>



Contact Information

Scott Haluska

Cell: (865) 414-0263

Email: Scott.Haluska@belewdrugs.com



Belew Drug



Samantha Boldin, PharmD

Cell: (865) 201-9978

Email: Samantha.Boldin@belewdrugs.com