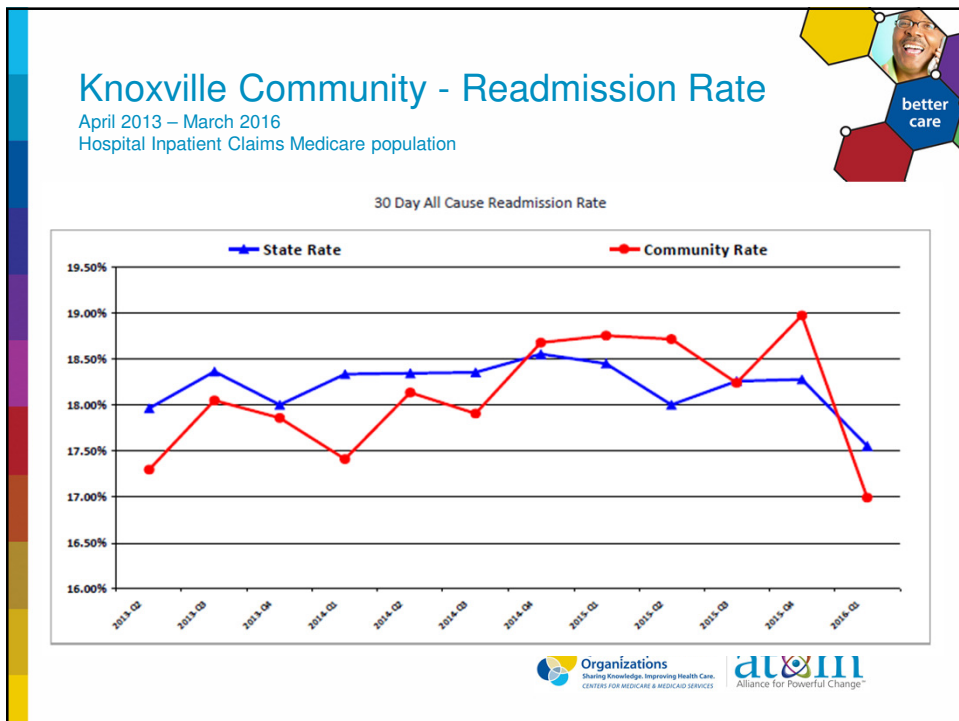


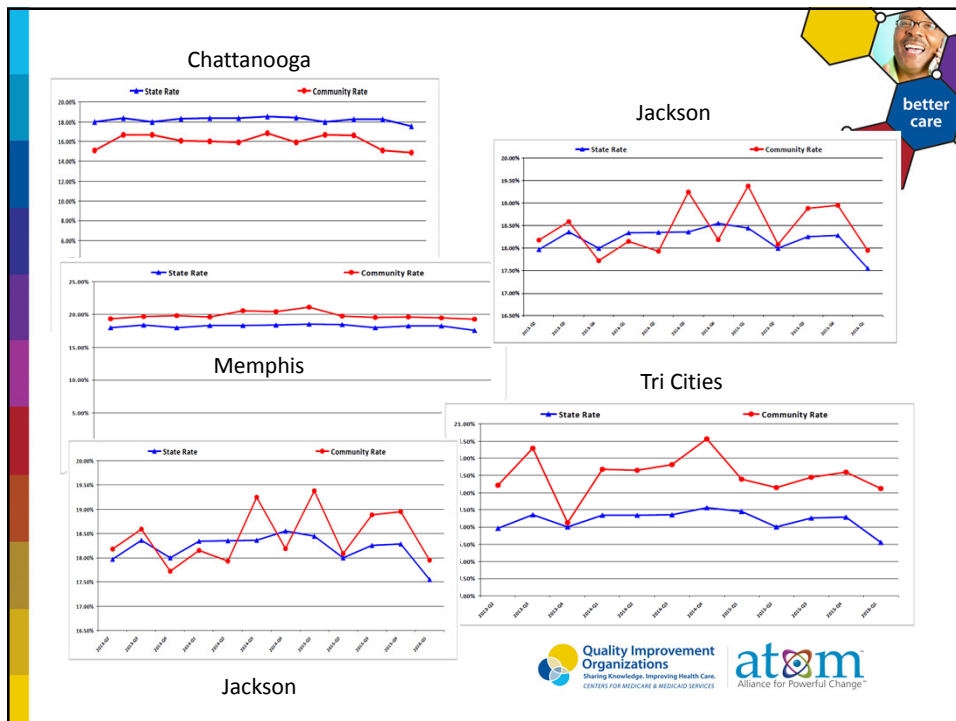
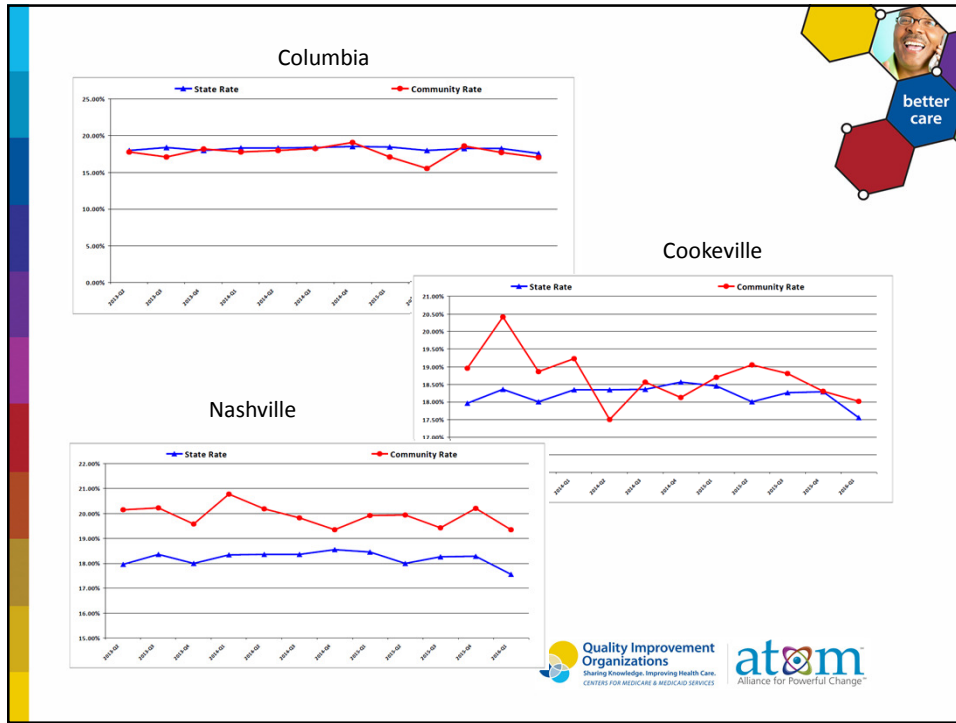
**Knoxville Community  
Data Update  
BBBHC**

Corley Roberts, MHA, CPHQ, ACSM EP-C, EIM  
Quality Improvement Advisor,  
Qsource/atom Alliance  
[croberts@qsource.org](mailto:croberts@qsource.org)

Quality Improvement Organizations  
Sharing Knowledge. Improving Health Care.  
CENTERS FOR MEDICARE & MEDICAID SERVICES

**atom**  
Alliance for Powerful Change™





# Knoxville Community - Discharge Destination

2015Q2 – 2016Q1

Hospital Inpatient Claims Medicare population

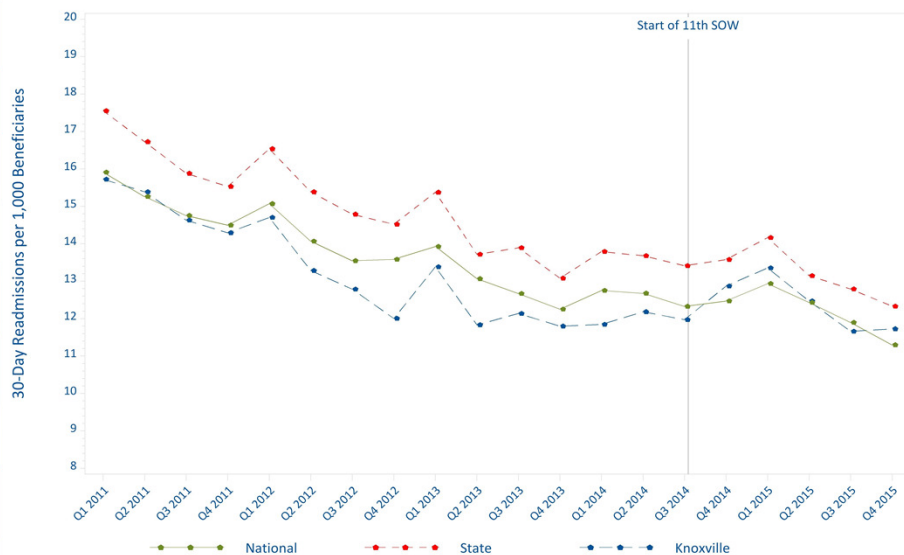


The code used to identify the status of the patient as of discharge

	Community			State			% Change
	30 Day ReAdmits	All 30 Day ReAdmits	%	30 Day ReAdmits	All 30 Day ReAdmits	%	
01: Discharged to home/self care (routine charge).	3076	6116	50.3%	22987	47422	48.5%	1.8%
02: Discharged/transferred to other short term general hospital for inpatient care.	43	6116	0.7%	760	47422	1.6%	-0.9%
03: Discharged/transferred to skilled nursing facility (SNF) with Medicare certification in anticipation of covered skilled care.	1426	6116	23.3%	10675	47422	22.5%	0.8%
04: Discharged/transferred to intermediate care facility (ICF).	58	6116	0.9%	640	47422	1.3%	-0.4%
05: Discharged/transferred to another type of institution for inpatient care (including distinct parts). NOTE: Effective 1/2009, psychiatric hospital or	2	6116	0.0%	11	47422	0.0%	0.0%
06: Discharged/transferred to home care of organized home health service organization.	1238	6116	20.2%	9921	47422	20.9%	-0.7%
07: Left against medical advice or discontinued care.	116	6116	1.9%	703	47422	1.5%	0.4%
30: Still patient.	3	6116	0.0%	46	47422	0.1%	0.0%



Tennessee  
Knoxville  
Quarterly 30-Day Readmissions per 1,000 Beneficiaries



This material was prepared by Telligen, the Quality Innovation Network National Coordinating Center, under contract with the Centers for Medicare & Medicaid Services (CMS), an agency of the U.S. Department of Health and Human Services. The contents presented do not necessarily reflect CMS policy. (1150W-QINCC-00794-05/15/16)

## National Readmission Rate Down!

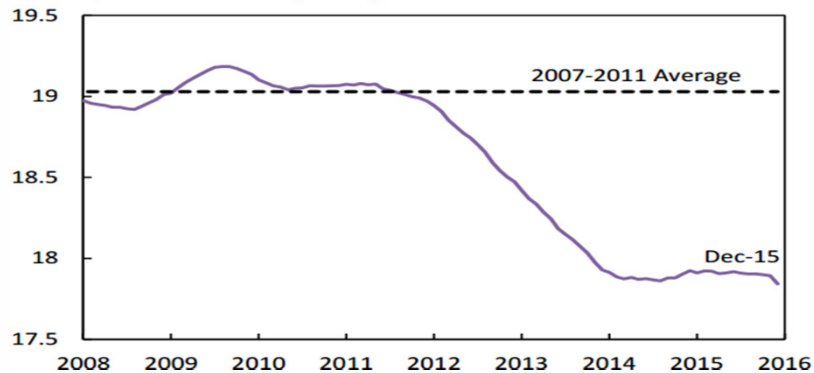
September 7, 2016

By Patrick Conway, M.D., principal deputy administrator and chief medical officer, CMS; and Tim Gronniger, deputy chief of staff, CMS

better care

### Medicare 30-Day, All-Condition Hospital Readmission Rate

Percent, 12-month moving average



Quality Improvement Organizations  
Sharing Knowledge, Improving Health Care.  
CENTERS FOR MEDICARE & MEDICAID SERVICES


atom  
Alliance for Powerful Change™

## National rates (cont.)

- ☒ Readmission rates fell by 8% nationally
  - ☒ Between 2010 and 2015
  - ☒ 50 states and the District of Columbia
- ☒ In 43 states, readmission rates fell by more than 5%
- ☒ In 11 states, readmission rates fell by more than 10%
- ☒ All states **but one** have seen Medicare 30-day readmission rates fall




Quality Improvement Organizations  
Sharing Knowledge, Improving Health Care.  
CENTERS FOR MEDICARE & MEDICAID SERVICES

atom  
Alliance for Powerful Change™



	2010		2015			
State	Hospital Admissions	Readmission Rate	Hospital Admissions	Readmission Rate	% change in rate	Reduction
TN	207,875	18.4%	180,666	16.8%	-8.7%	-2,905

Since 2010, across all states, Medicare beneficiaries have avoided 565,000 readmissions! (104,000 in 2015 alone!)

Thank **You** for your contribution and commitment to this work!

Presented September 22, 2016

